



2018 HORIZON FD85

LOA:	87' 1" (26.54m)	Build/Model Year:	2017 / 2018
Beam:	23' 2" (7.06m)	Builder:	HORIZON
Min Draft:	5' 5" (1.65m)	Type:	Motor Yacht Flybridge
Max Draft:	5' 9" (1.75m)	Price:	\$6,600,000 USD
Speed:	Cruising 14 Knots Max 17 Knots	Location:	Fort Lauderdale, Florida United States
VAT Paid:	US Duty Paid		

Additional Specifications For MIDNIGHT MOON:

LOA:	87' 1" (26.54m)	Delivery/Model	2018
Beam:	23' 2" (7.06m)	Year:	
Min Draft:	5' 5" (1.65m)	Year Built:	2017
Max Draft:	5' 9" (1.75m)	Refit Year:	2022
Hull Material:	Fiberglass	Builder:	HORIZON
Deck Material:	Teak	Model:	FD85
Range At Cruise		Type:	Motor Yacht Flybridge
Speed:		Top:	Hardtop
Range At Max		Engines:	1600 HP,Twin, Inboard, Diesel, Caterpillar, C32 Acert, 1720hrs / 1720hrs
Speed:	Cruising 14 Knots	Staterooms:	5
	Max 17 Knots	Sleeps:	10
Int Designer:	Cor D. Rover	Heads:	6
Fuel Capacity:	3480 Gal	Crew Berths:	4
Water Capacity:	400 Gal	Captain Cabin:	No
Holding Tank:	200 Gal	Classifications:	
Flag:	Cayman Islands	MCA: ISM:	
Location:	Fort Lauderdale, Florida United States		
Price:	\$6,600,000 USD		
Tax Status:	US Duty Paid		

Overview

"This open bridge FD85 is designed specifically to offer the benefits of a comfortable, smooth ride alongside maximizing interior volume. Her 23'2" beam allows for 5 comfortable staterooms, all with ensuite accommodations. The on-deck master is spacious and contributes to the large windows found throughout the main deck. The raised pilothouse is a comfortable indoor helm station that offers a second option when cruising. The open bridge offers a full bar complimented with updated soft goods and a beautiful flexi-teak floor finish. The full Isinglass enclosure allows for the bridge to be enclosed in inclement weather as well.

She is complimented with C32A 1600hp CAT's and has a 14-knot cruise. During the 2022 refit, an upgraded water maker was installed to make 1,800gpd, a dive compressor was installed in the transom storage, and a new dock mate controller installed among many other things.

Midnight Moon is a clean and spacious boat with many comforts that are seen on much larger vessels. We encourage you to come and see Midnight Moon!"

2021/2022 Refit

- Flexi teak on bridge level (\$60,000) with 5 year install & 10 year product warranty
- All new soft goods exterior
- 4 sun loungers on boat deck
- Boat deck sunshade and posts
- Privacy Sunshade for cockpit area
- 3 person hot tub on boat deck with custom 3 bar seating built in
- Replaced/Added flybridge, cockpit and bow fusion radio head units
- All exterior speakers upgraded to JL audio
- Paddle board mounts on hardtop
- Dockmate wireless controller added
- Replaced Aft deck formal dining table and chairs
- Added Soft wind doors on aft deck port and stbd
- Pepwave BR2 dual SIM card wifi
- Upgraded cellular antennas
- Garmin charts updated Nov 2022
- Additional 900gpd Sea Recovery water maker
- Dive compressor added in transom storage area
- All duct work and air handlers cleaned 12/2022
- Both a/c blowers on bridge replaced
- New port and stbd exhaust and spray rings 11/2022 with 5 year warranty

Proud Member of  YATCO

Yacht Connexion

1201 US Hwy 1
Suite 1
North Palm Beach, Florida 33408
United States

P: +1-561-268-2467
sales@yachtconnexion.com
<https://yachtconnexion.com/>

MIDNIGHT MOON

Specifications

White gel coat finish for hull
Hull, deck & superstructure built w/ SCRIMP™
One-piece hull SCRIMP™ cored lamination w/deep
skeg & longitudinal girders
High-density foam cored hull bottom, hull
sides, decks & superstructure
Stringers with high density foam coring
Foam cored reinforcement for strength
Interior structural components all properly bonded
to hull
Strong collision bulkhead for extra safety
International anti-fouling bottom paint w/anti-
osmosis treatment
High Performance Piercing Bow (HPPB)
Frameless windows, tinted Low-E tempered glass
Heavy-duty S/S 2" handrail w/ 1-1/2" stanchions
Heavy-duty 316 S/S cleats & fairlead w/rollers
CE approved S/S portholes
Pre-wired for LED boat name on stern & port/stbd
FB sides

Interior Decor & Equipment

Guest accommodations include on-deck master
stateroom, fwd VIP cabin, mirrored VIP cabins,
stbd twin guest cabin, all ensuite
Anegre semi-gloss wood on main deck & guest
staterooms w/Walnut accents
Walnut flooring & carpeted areas
GE stacked washer/dryer in guest companionway
Custom luxury interior package & lighting

Forward & Aft Decks

Non-skid fwd deck

(2) High tensile 1/2", 285 ft. anchor chains

(4) Maxwell anchor chain counters

(2) S/S 100kg anchors

Freshwater/seawater anchor chain washdown system

Fwd deck sunpads w/drink holders

Teak aft deck, swim platform & teak steps

S/S gates from swim steps to aft deck

Built in shower w/hot/cold water above swim platform

(2) Integrated stairways from aft deck to FB

Integrated port stairway to lower deck (crew/ER)

(2) FRP bulwark side doors

(2) Deckhouse side entrance doors, 1 sliding door stbd & 1 hinged door in port galley

S/S sliding door for main salon, self-locking

Custom aft deck lounge furniture

32" Skyvue LED TV per GA

Fusion Marine stereo amp & (4) speakers

Bar area w/ Corian top, sink, fridge, icemaker & storage

Hydraulic Hi/Lo swim platform w/pop up cleats (700 KG capacity)

(2) Aft deck corner hawser

(2) Maxwell VC2500 electric rope capstan on aft deck

MarQuipt aluminum 7-step side boarding sea stairs

Flybridge & Boat Deck

Flexi-teak boat deck

Hydraulic davit Steelhead ES1500

Air conditioning in FB, (2) 24k BTU

Integrated S/S rails around boat deck

S/S rail w/lower track for EZ2CY, if desired

Oversize drains w/ strainer on each corner w/internal overboard drains

Custom designed helm w/full set of engine controls, gauges and monitoring system

3 Person Jacuzzi with bar seating enclosure

Dual riding seats

Custom FRP L-shaped dinette & Corian table top

Custom FRP cabinet w/Corian top, sink, fridge, icemaker & storage

Hi/Lo 24" Aritex propane BBQ in FRP cabinet

Chest freezer aft of dinette

32" Skyvue LED TV

Fusion Marine stereo amp & (4) marine speakers

Mast w/antenna bracket

Single hatch on hardtop

Buell air horns on top of radar arch

Pilothouse

STIDD helm chair
L-shaped dinette w/table
Chart table w/ reading light
Custom-designed helm w/Walnut accents &
carbon- fiber dashboard panels

Electronics:

(5) Panasonic KX Telephone w/ intercom feature
in salon, pilothouse, master, VIP & crew mess
Exterior connector for shore phone & TV
KVH Tracvision HD7 satellite TV antenna & dummy
dome
WiFi booster system w/ wireless routers
Garmin Wi-Fi adapter kit
(2) CCD AXIS cameras, one on aft deck and one in
ER

Full Garmin Navigational System Includes:

(3) GPSMAP 8617 MDF 17" multifunction displays
Fantom 4 open array radar, 40 w, 72nm
GMR 1226 HD open array radar 12kW, 72nm
GXM Satellite weather antenna
GHC 20 Garmin Autopilot control unit
GPS NMEA 2000
(2) GMI 20 displays w/ AIRMAR DST800 Depth/
Speed/Temp/Wind Transducer
(2) Garmin VHF 300
GSD25 fish finder
GXM53 weather receiver
Richie SuperSport magnetic compass

Flybridge Navigation

(1) GPSMAP 7612 12" display
(2) GHS handsets
AIS600 transceiver + GA30 GPS
GHC 20 Garmin Autopilot control unit
(2) GMI20 display for transducer
GND 10 Black box bridge

Salon

Custom stone floor at salon entrance
Aft dayhead in main salon
Leather L-shaped sofa w/coffee table
(2) Custom chairs w/end table
Electric blinds
Wine cooler, icemaker
55" Samsung LED TV
Samsung Blu-ray player
Bose Lifestyle 135 Series III home theater system
Apple TV
Custom wood dining table w/chairs
Glass locker & storage

Galley

Stone countertops & floor
Bosch full height refrigerator w/ freezer
GE oven & microwave
GE trash compactor & disposal
GE dishwasher
Magic Corner unit for storage
Storage lockers
Full set of tableware + cookware
Built-in holders for glasses, plates & dishes

Master Stateroom

King-sized bed w/ storage drawers
Nightstands on either side of bed
Walk-in closet
Hanging lockers port & stbd of entry door
Skylight with electric blinds
Electric blinds for side windows
50" Samsung LED TV
Bose Lifestyle 135 Series III home theater system
Samsung Blu-ray player
Apple TV
Ensuite head w/ water closet, dual sinks & shower

Bow VIP Stateroom

Queen-sized bed w/ storage drawers
Large hanging locker
Storage lockers
Ensuite head w/toilet, sink & shower

VIP Stateroom

Queen-sized bed w/ storage drawers
Hanging locker
Storage per GA
Ensuite head w/water closet, sink & shower
40" Samsung LED TV
Fusion Marine home theatre system w/(2) speakers

Proud Member of 

Yacht Connexion

1201 US Hwy 1
Suite 1
North Palm Beach, Florida 33408
United States

P: +1-561-268-2467
sales@yachtconnexion.com
<https://yachtconnexion.com/>

MIDNIGHT MOON

Twin Guest Stateroom

Twin beds w/ sliding feature
Drawers underneath inboard bed
Hanging locker
32" Samsung LED TV
Fusion Marine home theatre system w/(2) speakers
Ensuite head w/ toilet, sink & shower

Crew Quarters

(2) Twin cabins w/ pullman & hanging locker
Head w/toilet, sink & shower
Crew mess with L-shaped dinette and stools
Bosch full height fridge/freezer
GE microwave
GE stacked washer/dryer
24" Samsung LED TV
Fusion Marine home theatre system w/(2)
speakers in crew mess & cabins
Access from transom & port aft deck stairwell

Laundry Room

Under-counter fridge
Sink
Ironing board
Countertop space & storage

Engine and Propulsion

Twin CAT C32A 1600 HP engines

S/S shafts Aqualoy 22HS

5 Blade propellers

Main & intermediate bronze struts w/backing
plates

Shaft & rudder packing glands w/Tides Marine
seals

ABT Zero Speed Stabilizer (370/16X)

Hydraulic ABT bow & stern thrusters 38HP each

Complete Delta-T engine room ventilation system

Glendinning electronic engine control system for
FB & PH helms; remote plug on aft deck

S/S emergency tiller in rudder cabin

Bennett trim tabs w/indicators

Underwater exhaust system for engines w/bypass
mufflers

Anti-noise treatment to exhaust system

Engine mounts on S/S engine bed bonded to FRP
hull girder

Fire insulation & insulated ER door

Engine alarm system for low oil pressure & high
water temp

Air compressor

Central vacuum cleaner

Pre-plumb and pre-wired for dive compressor

Proud Member of 

Yacht Connexion

1201 US Hwy 1

Suite 1

North Palm Beach, Florida 33408

United States

P: +1-561-268-2467

sales@yachtconnexion.com

<https://yachtconnexion.com/>

MIDNIGHT MOON

Page 10 of 47

Mechanical Systems

Chilled water Marine Air air conditioning
Backup A/C circulation pump
3,480 gallon aluminum fuel tanks w/sight &
electric gauges
Dual Racor 75/1000 MA fuel
filters/water separator, each engine
Electric fuel transfer pump + one manual
emergency spare pump
Reverso FPS210 fuel polishing system
Oil change pump system for engines & generators
400 gallon fiberglass water tank
Sea Recovery AQM water maker, 900 gal/day
High-volume AC fresh water pressure pump &
back up DC pump
Fresh water charcoal filters in main supply pipe
& galley
Marine grade lines for fresh water system
(2) 30 gallon water heaters
Hot water circulation pump
Headhunter sanitary waste treatment system
Headhunter toilet system
200 gallon holding tank w/macerator pump
100 gallon sump tank
"Y" valve for holding tank w/deck fitting
for dockside pump out
Five electric RULE bilge pumps
(2) Manual bilge pumps in ER & forward cabin
Bilge exhaust ventilation fans
Seafire fixed fire extinguisher (FM200) for ER
w/remote control
Auto shutdown system
Automatic fire damper system
(4) Portable fire extinguishers in recessed lockers

Yacht Connexion

1201 US Hwy 1
Suite 1
North Palm Beach, Florida 33408
United States

P: +1-561-268-2467
sales@yachtconnexion.com
<https://yachtconnexion.com/>

MIDNIGHT MOON

Electrical Systems

Lighting:

LED lighting system throughout interior & exterior
Dimmer system for ceiling lights in aft deck,
side deck, FB, boat deck
Dimmer system for ceiling lights in salon, master,
VIP & PH

Electrical:

Maretron monitoring & control system
(2) Onan 29kW generators w/ sound shields
Hours: 3976 / 4190 as of 8/16/2023
100A shore power system w/ (2) 100A
Glendinning cable masters & (1) 100A
Charles ISO boost transformer
(2) House battery inverter/chargers
Vapor proof battery switch
Emergency power package & lighting system
Sub-panel design in each zone for electric
distribution
(4) Engine start batteries 255Ah Lifeline AGM
(8) 210Ah Lifeline AGM batteries for DC 24V
service power
(2) 210Ah Lifeline emergency batteries w/dedicated
charger
GFI protection for all AC outlets in heads, galley &
ER
Electrolysis bonding system
Cathodic protection w/zinc anodes for shafts, struts
(8) Underwater lights
(2) Stern docking lights
(2) Tokai Sanshin search lights
(2) Flood lights for mast

Aerial Bow and Port Side



Bow and Port Side 1




Port Side View



Aerial View Boat Deck



Proud Member of 

Yacht Connexion
1201 US Hwy 1
Suite 1
North Palm Beach, Florida 33408
United States

P: +1-561-268-2467
sales@yachtconnexion.com
<https://yachtconnexion.com/>


MIDNIGHT MOON

Aerial View Boat Deck 2



Bow Starboard Side View



Proud Member of 

Yacht Connexion
1201 US Hwy 1
Suite 1
North Palm Beach, Florida 33408
United States

P: +1-561-268-2467
sales@yachtconnexion.com
<https://yachtconnexion.com/>

MIDNIGHT MOON

Bow Port Side View 3



Starboard Aft View 1




Full Aft View



Port Aft View 1



Proud Member of 

Yacht Connexion

1201 US Hwy 1

Suite 1

North Palm Beach, Florida 33408

United States

P: +1-561-268-2467

sales@yachtconnexion.com

<https://yachtconnexion.com/>

MIDNIGHT MOON


Page 17 of 47

Aerial View Bow to Stern



Bow Starboard View 1



Proud Member of 

Yacht Connexion
1201 US Hwy 1
Suite 1
North Palm Beach, Florida 33408
United States

P: +1-561-268-2467
sales@yachtconnexion.com
<https://yachtconnexion.com/>

MIDNIGHT MOON

Full Starboard View 1



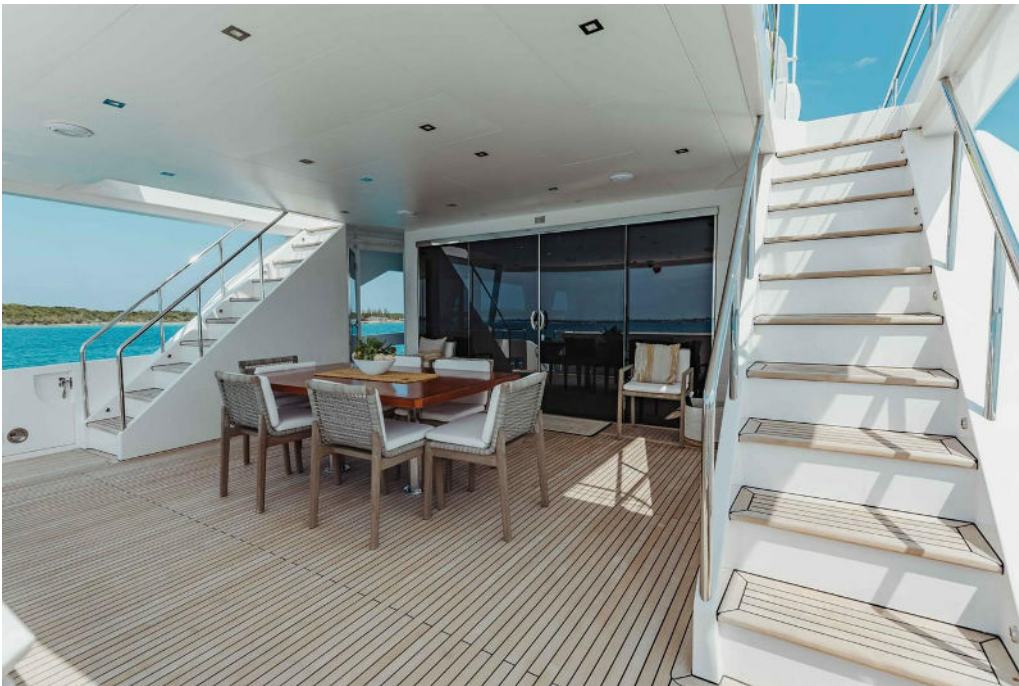
Aft Deck Table and 6 Chairs



Aft Deck Table Chairs and Storage Cabinet



Aft Deck Port/Starboard Staircases




Aft Deck Port Staircase



Transom and Stairs to Aft Deck



Proud Member of  YATCO

Yacht Connexion
1201 US Hwy 1
Suite 1
North Palm Beach, Florida 33408
United States

P: +1-561-268-2467
sales@yachtconnexion.com
<https://yachtconnexion.com/>

MIDNIGHT MOON

Teak Swim Platform



Boat Deck and 4 Lounge Chairs




Lounge Chairs and Davit to Starboard



Hot Tub and 3 Stools



Proud Member of 

Yacht Connexion
1201 US Hwy 1
Suite 1
North Palm Beach, Florida 33408
United States

P: +1-561-268-2467
sales@yachtconnexion.com
<https://yachtconnexion.com/>


MIDNIGHT MOON

Hot Tub and Beverage Counter



Hot Tub w/Bar and Dining Forward



Proud Member of 

Yacht Connexion
1201 US Hwy 1
Suite 1
North Palm Beach, Florida 33408
United States

P: +1-561-268-2467
sales@yachtconnexion.com
<https://yachtconnexion.com/>

MIDNIGHT MOON

Page 24 of 47

Bar w/4 Stools and Dining Starboard



Bar and Dining with Marble Table



Bar and TV to Port



L-shaped Settee and Marble Dining Table



Helm Station



Helm Electronics and NAV




Propane Grill



Flybridge Freezer Storage



Proud Member of 

Yacht Connexion
1201 US Hwy 1
Suite 1
North Palm Beach, Florida 33408
United States

P: +1-561-268-2467
sales@yachtconnexion.com
<https://yachtconnexion.com/>

MIDNIGHT MOON

Salon L-shape Sofa and Coffee Table



Salon Looking Forward w/2 Starboard Chairs



Salon Looking Aft w/TV



Main Deck Dayhead



Dining Area Forward of Salon



Dining Area Looking Aft



Dining Area w/Crystal Lamp Above Table



Galley w/Stainless Steel Appliances




Galley Counter Tops



Galley Stainless Refrigerator



Proud Member of 

Yacht Connexion
1201 US Hwy 1
Suite 1
North Palm Beach, Florida 33408
United States

P: +1-561-268-2467
sales@yachtconnexion.com
<https://yachtconnexion.com/>

MIDNIGHT MOON

On Deck Master Stateroom



Master Stateroom w/Marble Panel Above Berth




Master Stateroom and Head



Master Stateroom Vanity and Stool



Proud Member of 

Yacht Connexion
1201 US Hwy 1
Suite 1
North Palm Beach, Florida 33408
United States

P: +1-561-268-2467
sales@yachtconnexion.com
<https://yachtconnexion.com/>


MIDNIGHT MOON

Master Stateroom Vanity and Shower



VIP Forward Stateroom



Proud Member of 

Yacht Connexion
1201 US Hwy 1
Suite 1
North Palm Beach, Florida 33408
United States

P: +1-561-268-2467
sales@yachtconnexion.com
<https://yachtconnexion.com/>

MIDNIGHT MOON

Page 36 of 47

VIP Stateroom and TV



VIP Vanity and Shower



Stairwell down to guest accomodations



Twin Guest Stateroom




Twin Guest Stateroom and Blue Pillows



Twin Guest Stateroom Vanity and Shower



Proud Member of 

Yacht Connexion
1201 US Hwy 1
Suite 1
North Palm Beach, Florida 33408
United States

P: +1-561-268-2467
sales@yachtconnexion.com
<https://yachtconnexion.com/>

MIDNIGHT MOON

Twin Guest Shower



Starboard Guest Stateroom




Starboard Guest Head



Port Guest Stateroom



Proud Member of 

Yacht Connexion
1201 US Hwy 1
Suite 1
North Palm Beach, Florida 33408
United States

P: +1-561-268-2467
sales@yachtconnexion.com
<https://yachtconnexion.com/>

MIDNIGHT MOON

Port Guest Head



Forward Laundry Room



Pilothouse Helm Station



Pilothouse Helm and Electronics




Pilothouse Helm Navigation



Pilothouse 4 Steps Down From Boat Deck



Proud Member of 

Yacht Connexion
1201 US Hwy 1
Suite 1
North Palm Beach, Florida 33408
United States

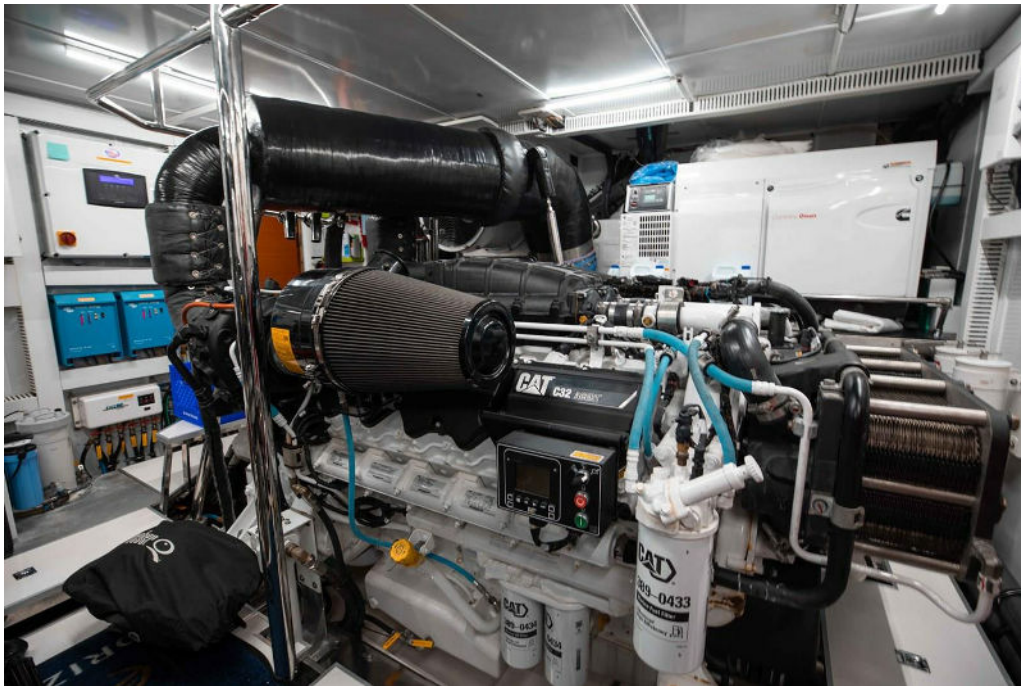
P: +1-561-268-2467
sales@yachtconnexion.com
<https://yachtconnexion.com/>


MIDNIGHT MOON

Engine Room Onan Generators



Engine Room Caterpillar Engines



Proud Member of  YATCO

Yacht Connexion
1201 US Hwy 1
Suite 1
North Palm Beach, Florida 33408
United States

P: +1-561-268-2467
sales@yachtconnexion.com
<https://yachtconnexion.com/>

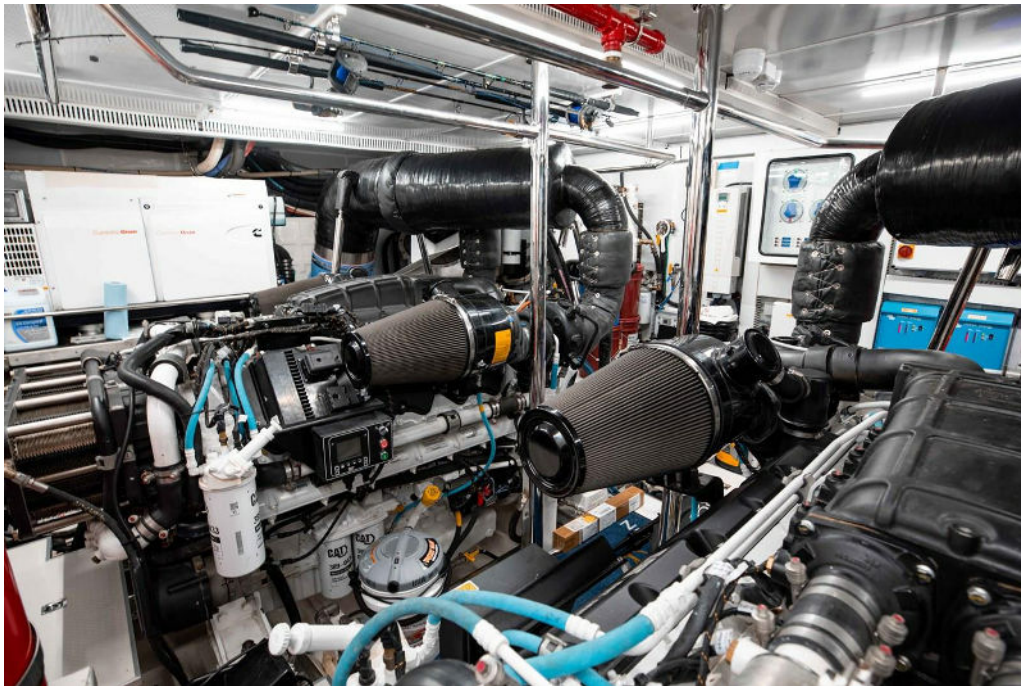
MIDNIGHT MOON


Page 45 of 47

Engine Room Caterpillar C32 Acerts



Engine Room 1



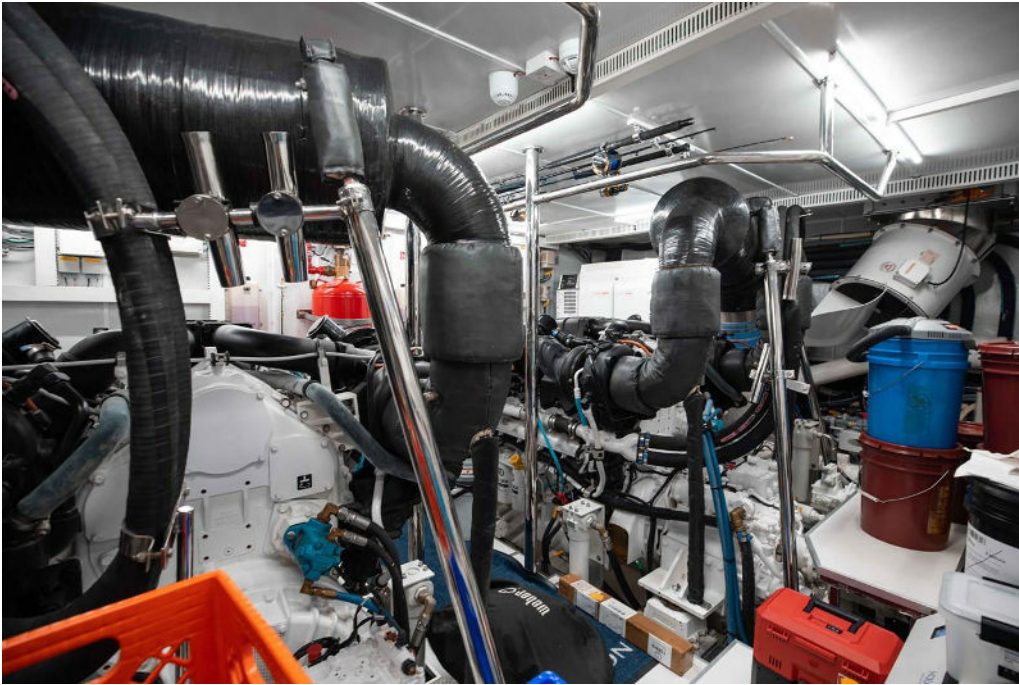
Proud Member of  YATCO

Yacht Connexion
1201 US Hwy 1
Suite 1
North Palm Beach, Florida 33408
United States

P: +1-561-268-2467
sales@yachtconnexion.com
<https://yachtconnexion.com/>

MIDNIGHT MOON

Engine Room 2



Engine Room 3

