




2019 HORIZON FD87

LOA:	90' 1" (27.46m)	Build/Model Year:	2019 / 2019
Beam:	23' 3" (7.09m)	Builder:	HORIZON
Max Draft:	5' 8" (1.73m)	Type:	Motor Yacht Enclosed Bridge
Speed:	Cruising 15 Knots Max 20 Knots	Price:	\$7,999,000 USD
VAT Paid:	US Duty Paid	Location:	Dania Beach, Florida United States

Proud Member of  YATCO

Yacht Connexion
1201 US Hwy 1
Suite 1
North Palm Beach, Florida 33408
United States

P: +1-561-268-2467
sales@yachtconnexion.com
<https://yachtconnexion.com/>

BELLA TU

Page 1 of 33

Additional Specifications For BELLA TU:

LOA:	90' 1" (27.46m)	Delivery/Model	2019
Beam:	23' 3" (7.09m)	Year:	
Max Draft:	5' 8" (1.73m)	Year Built:	2019
Hull Material:	Fiberglass	Builder:	HORIZON
Range At Cruise		Model:	FD87
Speed:		Type:	Motor Yacht Enclosed Bridge
Range At Max		Top:	Enclosed P.H. W/Sundeck
Speed:		Engines:	1600 HP, Twin, Inboard, Diesel, MTU, 10V2000 M96L, 2072hrs / 2072hrs
Speed:	Cruising 15 Knots Max 20 Knots	Staterooms:	5
Fuel Capacity:	3480 Gal	Sleeps:	10
Water Capacity:	400 Gal	Heads:	7
Holding Tank:	200 Gal	Crew Quarters:	2
Flag:	United States	Crew Berths:	3
Location:	Dania Beach, Florida United States	Captain Cabin:	Yes
Price:	\$7,999,000 USD	Classifications:	
Tax Status:	US Duty Paid	MCA: ISM:	

Overview

Yacht Connexion would like to introduce BELLA TU, she is a 2019 Horizon FD87 that has been professionally maintained and well maintained. BELLA TU hosts a spacious aft deck with informal dining and a wet bar, alongside an interior dayhead just inside the salon door. Formal dining can be set up for 8 guests forward of the salon, or be stowed away if you prefer a set of breakfast bars for 4 each. The enclosable galley allows the crew to switch between a buffet style meal to a closed off galley for more formal occasions.

The on-deck master is a key feature, as it allows for the owner to have very easy access to their stateroom and have privacy from the guests and crew when necessary. Down into the guest area, 4 ensuite staterooms allow all your guests to be comfortable while on board. In the skylounge, 3 Stidd chairs are situated at the helm station and accompanied by a desk, settee, pop-up TV and a day head.

The boat deck is yet another entertaining space, with a settee and a walk-around bar with 4 fixed barstools, alongside a propane grill with further tender storage. The fun continues forward on the bow with more seating and fridge space.

BELLA TU has a full beach club with a garage door that creates the perfect space to relax while at anchor, and a great crew area when closed off. She is equipped with twin 1,600hp MTU's and dual Onan 29kW generators. BELLA TU is in extremely good condition and is a must see.

Highlights Features and Upgrades

- * MTU extended warranty thru 3/2024 or 4000 hours
- * Spot Zero MTZ Series II double pass installed 7/21
- * FLIR installed 11/2021
- * Yacht Controller installed 01/2022

Headhunter sanitary treatment system
Hydraulic steelhead davit SM2000
Sea Recovery water maker 1400 gal/day
ABT zero speed stabilizers
ABT hydraulic bow/stern thruster
Maretron control & monitoring system
100amp shore power system
Reverso fuel polishing system
UV Water Filtration System
Hydraulic Hi/Lo swim platform

Hull General Specifications

ABS/DNV type approved fiber/resin & sandwich core material applied
White gel coat finish
One-piece hull cored lamination w/ deep skeg and longitudinal girders
Hull, deck & superstructure built w/ 3D VARTM infusion for improved strength & less weight
High density foam cored hull bottom
High density foam cored hull sides, decks and superstructure
Stringers with high density foam coring, bonded during layup for increased structural rigidity and strength
Interior structural components all properly bonded to hull
Strong collision bulkhead for extra safety
International anti-fouling bottom paint w/ anti-osmosis treatment
PropSpeed/PropGold metal paint for underwater appendages
Tunnels for reduced draft
HPPB (High Performance Piercing Bow)

Decks

Non-skid fwd deck and side decks
(2) High tensile 1/2" 300ft anchor chains
(2) Anchor chain counters Maxwell AA560
(2) S/S 100kg anchors
(2) Maxwell VWC3500 windlass
Freshwater/seawater anchor chain washdown
Heavy-duty S/S 1 3/4" handrail w/ 1-1/2" stanchions & steel cable
(2) FRP aft bulwark side boarding doors
Frameless windows, tinted Low-E tempered glass for windshield
Frameless windows, tinted tempered laminated glass for side windows
Portuguese bridge w/ U-shaped seating & sun pads per layout
Cabinet at fwd settee w/ fridge w/ freezer & icemaker
(2) Integrated stairs from aft deck to upper deck
Wing doors to port & stbd side decks
Teak aft deck, swim platform & teak steps
S/S sliding door for main salon, self-locking
Custom aft deck seating + table arrangement
(2) Aft deck corner fairleads
(2) Maxwell VC2500 capstan
Aft deck mini bar w/ sink, fridge & lockers under stairs
Aft deck electric folding TV cabinet w/ Samsung 43" LED TV
Fusion Marine Stereo w/ speakers
Marquipt aluminum 7-step side boarding sea stairs; storage aft
Sunshades at foredeck
Pop-up lights next to sunpad on foredeck

Beach Club

Hydraulic door with pantograph door in the middle
Hydraulic Hi/Lo swim platform w/ 2000lb capacity & removable rails
Sofa seat w/ table
Bar with sink & fridge/freezer

Skyounge and Boat Deck

Skyounge design w/ dinette, dayhead, desk
(3) STIDD helm chairs at helm
Samsung 43" Hi/Lo TV
Skyounge electric Roman blinds
Custom designed helm w/ full set of engine gauges, monitoring system for important equipment, fuel & water gauges, Ritchie Supersport magnetic compass, surveillance camera system (PTZ cameras for aft deck & engine room), bilge pump panel & navigational lights
Skyounge Bose SoundTouch 130 home theater system
Samsung Blu-ray player
Apple TV
Non-skid boat deck
Removable S/S rails around boat deck
Oversize drains w/ strainer on each corner w/ internal overboard drains
Custom L-shaped boat deck dinette and table
Two level bar w/ S/S bar stools, sink, fridge & icemaker
Sunshade for boat deck area, per layout
Hi/Lo 24" propane BBQ in FRP cabinet
Radar arch w/ antenna bracket
(2) Hatches on hardtop
(2) Tokai Sanshin search lights
Buell air horns on top of radar arch
Hydraulic steelhead davit SM2000
(4) Flood lights for mast & boat deck
Fusion Marine stereo system w/ speakers
MTU wired remote plug in

Interior Decor and Equipment

Guest accommodations include on-deck master stateroom, fwd VIP cabin, port & stbd queen cabins & twin guest room, all ensuite
Crew area has 2 staterooms, full head, crew galley & dinette, w/ access from aft deck and transom
70% Gloss American Oak for main wood w/ hi-gloss Wenge accents (trim, walls, furniture, per photos)
Fabrica carpet for all guest staterooms
Oak Arizona floor for main salon, dining, galley and skyounge & guest stairwells in Rosewood
Cambria quartz countertops & flooring for all heads
Stacked GE washer/dryer in guest & crew companionway (total of 2)

Salon

Leather L-shaped sofa, coffee table & chair
Custom area rug
(2) Leather chairs & table to stbd
Custom folding dining table w/10 hi-lo chairs to be used at dining or bar height seating
Sliding door to stbd; single opening door to port
Electric single treatment curtains
Dayhead in main salon
55" LED TV
Bose Lifestyle 650 home theatre system
Bose Omni Jewel satellite radio system
Samsung Blu-ray player
Apple TV
Galley

Galley

Cambria quartz countertops & floor
Full height Subzero fridge and freezer w/ S/S paneling
GE cooktop, oven and range
GE dishwasher & trash compactor
S/S sink w/ GE disposal
U-line wine cooler
Full height pantry
Hi/Lo screen & privacy doors to enclose galley
Opening porthole on port side

Master Stateroom

50" Samsung LED TV
King bed w/ storage drawers & nightstands
Port side lounge chair; desk to stbd
Ensuite head w/ dual sinks, shower with opening porthole
Electric roman shades
Walk-in closet + 2 hanging lockers (port and stbd)
Opening porthole on stbd side
Bose SoundTouch 130 home theatre system
Samsung Blu-ray player
Apple TV

VIP Stateroom Forward

Queen bed w/ storage drawers & nightstands
Large hanging locker on stbd side
Ensuite head w/ sink, shower & toilet
40" Samsung LED TV
Fusion stereo system w/ speakers

Guest Stateroom Port

Queen bed & w/ storage drawers & nightstands
Large hanging lockers
Ensuite head w/ sink, shower & toilet
40" LED TV
Fusion stereo system w/ speakers

Guest Stateroom Starboard

Queen bed & w/ storage drawers & nightstands
Large hanging lockers
Ensuite head w/ sink, shower & toilet
40" LED TV
Fusion stereo system w/ speakers

Twin Guest Stateroom

Sliding twin beds
Hanging locker
Ensuite head w/ sink, shower & toilet
40" Samsung LED TV
Fusion stereo system w/ speakers

Crew Quarters

Captain's cabin w/ double bed
Single bunk cabin w/ pullman
Head w/ sink, shower & toilet
Crew mess w/ fridge & freezer drawer w/ icemaker
Dinette w/ table
GE microwave
Kenyon cooktop
32" Samsung LED TV
Fusion Marine stereo system w/ speakers in beach club/mess, captain's cabin
& bunk cabin
Stacked washer/dryer

Electronics and Navigation

TV antenna on top of radar arch
KVH TracVision HD7 + KVH TracPhone V7-IP
Empty Dome (SAT phone pre-wire)
Wave wifi with Pepwave 4G
(5) Panasonic PBX Telephones with intercom feature
Exterior connector for shore phone and cable TV
Garmin GMR 1226 72" 12kW 72nm open array radar system & GMR Fantom 4
solid-state open array and pedestal
(4) Garmin GPSMAP 8624 24" multifunction display
(2) Garmin GPS 19x NMEA
MBB300C for inputting Maretron info to Garmin
GXM Satellite weather antenna
(2) Garmin VHF 210
Garmin AIS 600
Garmin Autopilot control unit
Garmin instrument display w/ Wind transducer; depth, speed & temp transducer
Garmin GSD 25 + Airmar fishfinder

Engine and Propulsion

Twin MTU 10V2000M96L 1600HP engines, Hours: 2072/2072 April 2024
2,000 hours service to engines Nov 2023
(3) fuel tanks
S/S shafts Aqualoy 22HS
High performance S-class 5 Blade propellers
Main & intermediate bronze struts w/ backing plates
Shaft & rudder packing glands w/ Tides
Marine seals
ABT Zero Speed Stabilizer (370/16X)
Hydraulic ABT bow & stern thrusters, 45HP each
Delta-T engine room ventilation system
S/S Rudder with Zinc plates
S/S emergency tiller in rudder cabin
Underwater exhaust system for engines w/ bypass mufflers
Teleflex Seastar Steering System
Anti-noise treatment to exhaust system
Bennett heavy-duty trim tabs w/ indicators
Engine mounts on S/S engine bed bonded to FRP hull girder
Insulated ER door
Clean design w/ lightweight Tubus Bauer honeycomb floor
S/S overhead grab rail on each side of engine
Engine room LED ceiling lights & LED lights under engines
Engine alarm system for low oil pressure & high water temp
Bauer dive compressor
Swan air compressor
Central vacuum cleaner
Air conditioning in ER

Yacht Connexion

**1201 US Hwy 1
Suite 1
North Palm Beach, Florida 33408
United States**

**P: +1-561-268-2467
sales@yachtconnexion.com
https://yachtconnexion.com/**

BELLA TU

Mechanical Systems

Chilled water Marine Air air conditioning
Fuel tanks w/ sight & electrical gauges
Fuel filters/water separator supplied by MTU each engine
Dual Racor 75/500-MA fuel filters, one on each generator
(2) Electric fuel transfer pumps
Reverso FPS210 fuel polishing system
Oil change pump system for engines, gears, & generators
400 Gallon FRP water tank
Sea Recovery AQM water maker, 1400 gal/day
High-volume Headhunter AC fresh water pressure pump & back up DC pump
Fresh water charcoal filters in main supply pipe & galley
Fresh water hose for filling engine and generator expansion tank
Marine grade lines for fresh water system
(2) 30 gallon water heaters
Hot water circulation pump
Headhunter Bravo toilet system
Headhunter sanitary waste treatment system
200 gallon holding tank w/ macerator pump
100 gallon sump tank
Sump pumps system for grey water
Electric level indicators for holding tank & sump tank
(5) Electric rule bilge pumps
(2) Manual bilge pumps in ER & forward staterooms
High water level bilge alarm
Bilge exhaust ventilation fans
Seafire fixed fire extinguisher (FM200) for ER w/ remote control
Fire insulation in engine room
Fire resistant treatment for pipe
Auto shutdown system
Automatic fire damper system
(4) Portable fire extinguishers in recessed lockers
Integrated fire alarm in skylounge w/ heat & smoke detectors in each cabin

Electrical System


LED lighting system throughout interior & exterior
Maretron monitoring & control system
(2) Onan 29kW/60Hz generators w/ sound shields, Hours: 2594/2598 April 2024
100A shore power system w/ ISO Boost transformers 100A (x2) & (x2) 100A
Cable master
Vapor proof battery switch
(4) 244AH AGM start batteries for engines/ gens w/ (2) battery chargers
(8) 210AH Lifeline AGM batteries for boat's DC 24V service power w/ (2) combined inverter/chargers
(2) 210AH Lifeline emergency batteries w/ independent battery charger
Main electric panel includes AC & DC circuit breakers
Emergency power package & lighting system
AC volt receptacles located throughout including engine room
GFI protection for all AC outlets in heads, galley & ER
Electrolysis bonding system
Cathodic protection w/ zinc anodes for shafts, struts, etc.
Dimmer system for LED ceiling lights in salon, master & VIP staterooms
Dimmer system for LEC ceiling lights in aft deck & skylounge
(8) Underwater lights
(2) Stern docking lights

Bow and Starboard View



Bow and Port View



Proud Member of  YATCO

Yacht Connexion
1201 US Hwy 1
Suite 1
North Palm Beach, Florida 33408
United States

P: +1-561-268-2467
sales@yachtconnexion.com
<https://yachtconnexion.com/>


BELLA TU

Starboard Aft View



Aft View and Boat Deck



Proud Member of  YATCO

Yacht Connexion

1201 US Hwy 1

Suite 1

North Palm Beach, Florida 33408

United States

P: +1-561-268-2467

sales@yachtconnexion.com

<https://yachtconnexion.com/>

BELLA TU


Page 11 of 33

Aft View



Bow View



Proud Member of 

Yacht Connexion
1201 US Hwy 1
Suite 1
North Palm Beach, Florida 33408
United States

P: +1-561-268-2467
sales@yachtconnexion.com
<https://yachtconnexion.com/>

BELLA TU

Bow Blue and White Sunpad 1



Bow Blue and White Sunpad Looking Aft




Bow Blue and White Sunpad 2



Boat Deck L-Shape Settee and Hi-0Lo Table



Proud Member of  YATCO

Yacht Connexion
1201 US Hwy 1
Suite 1
North Palm Beach, Florida 33408
United States

P: +1-561-268-2467
sales@yachtconnexion.com
<https://yachtconnexion.com/>

BELLA TU

Page 14 of 33

Boat Deck Aft with Blue Upholstered Lounges



Aft Deck Sofas and Cocktail Table




Aft Deck Sofas and Wood Cocktail Table



Aft Deck Sofas and Sliding Glass Doors to Salon



Proud Member of  YATCO

Yacht Connexion
1201 US Hwy 1
Suite 1
North Palm Beach, Florida 33408
United States

P: +1-561-268-2467
sales@yachtconnexion.com
<https://yachtconnexion.com/>

BELLA TU

Aft Deck Sofas Looking to Port



Aft Deck Sofas with Blue and Orange Pillows



Aft Deck Looking Aft



Salon w/White Sofa Looking Forward



Salon White Sofa and Dining Forward



Salon White Sofa and Coffee Table Looking to Port



Salon Chair and Sofa Looking Aft



Salon Looking Aft to TV and Sofa



Salon Side Chairs and Side Table



Salon View Looking Directly Aft



Salon View to Starboard



Wood Dining Table w/8 Chairs




Wood Dining Table w/Place Settings



Galley Marble Counters and Stainless Fridge



Proud Member of 

Yacht Connexion
1201 US Hwy 1
Suite 1
North Palm Beach, Florida 33408
United States

P: +1-561-268-2467
sales@yachtconnexion.com
<https://yachtconnexion.com/>


BELLA TU

Galley Counter Top and Stainless Appliances



Master Stateroom Looking to Port



Proud Member of  YATCO

Yacht Connexion
1201 US Hwy 1
Suite 1
North Palm Beach, Florida 33408
United States

P: +1-561-268-2467
sales@yachtconnexion.com
<https://yachtconnexion.com/>

BELLA TU


Page 24 of 33

Master Stateroom Desk and Chair



Master Stateroom White Leather Lounge



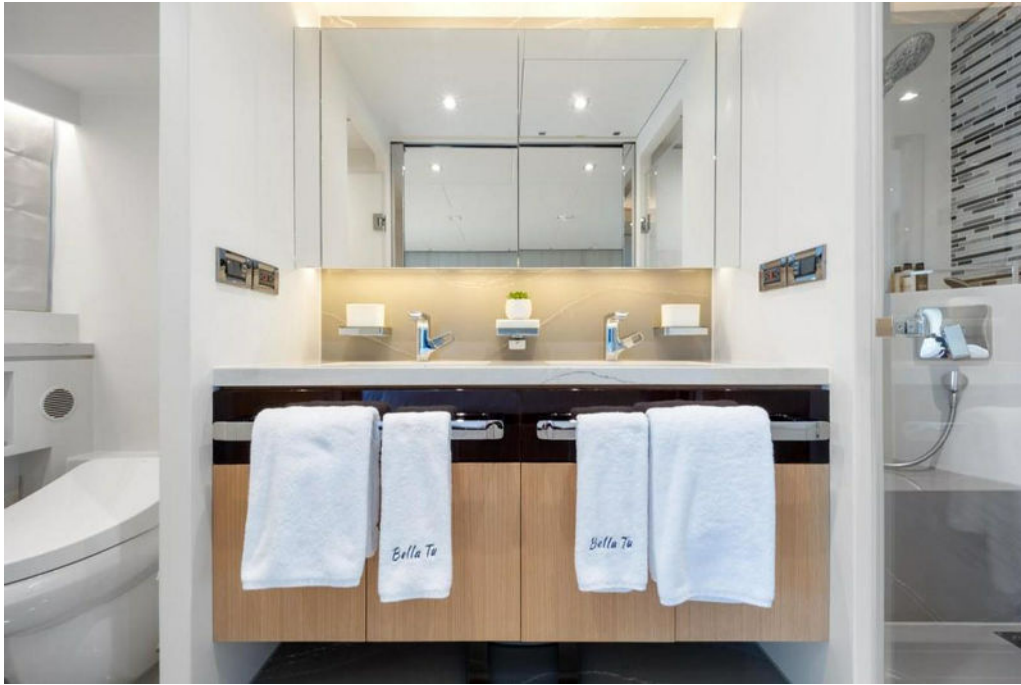
Proud Member of 

Yacht Connexion
1201 US Hwy 1
Suite 1
North Palm Beach, Florida 33408
United States

P: +1-561-268-2467
sales@yachtconnexion.com
<https://yachtconnexion.com/>


BELLA TU

Master His n Hers Head and Vanity



Master Walk-In Shower



Proud Member of  YATCO

Yacht Connexion
1201 US Hwy 1
Suite 1
North Palm Beach, Florida 33408
United States

P: +1-561-268-2467
sales@yachtconnexion.com
<https://yachtconnexion.com/>

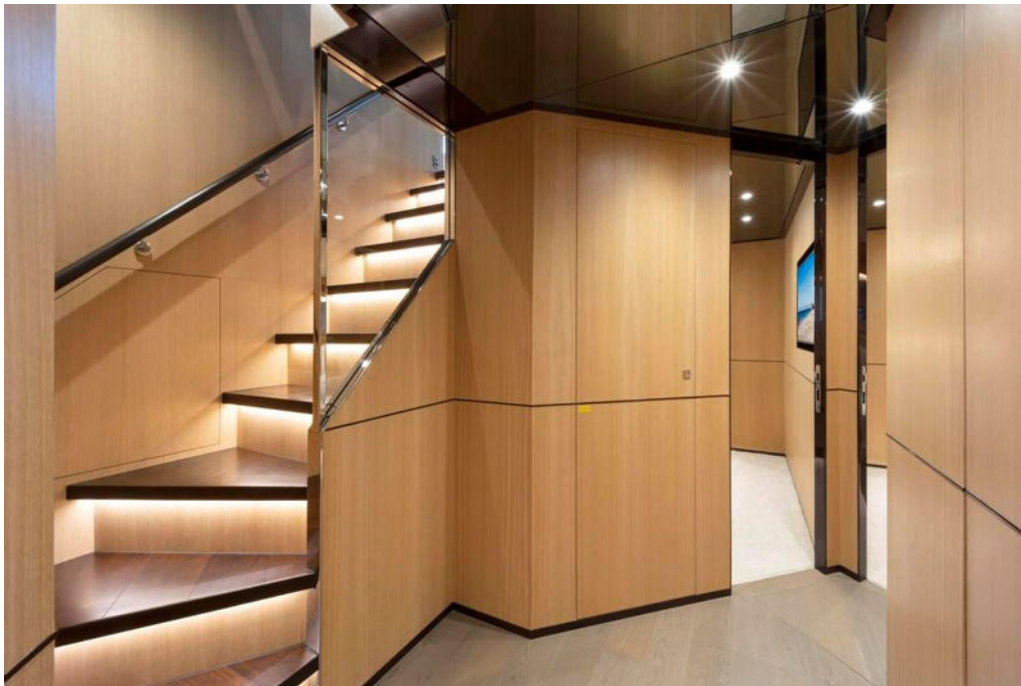
BELLA TU


Page 26 of 33

Master Vanity and Head to Port



Wood Panels Staircase to Guest Staterooms



Proud Member of  YATCO

Yacht Connexion
1201 US Hwy 1
Suite 1
North Palm Beach, Florida 33408
United States

P: +1-561-268-2467
sales@yachtconnexion.com
<https://yachtconnexion.com/>

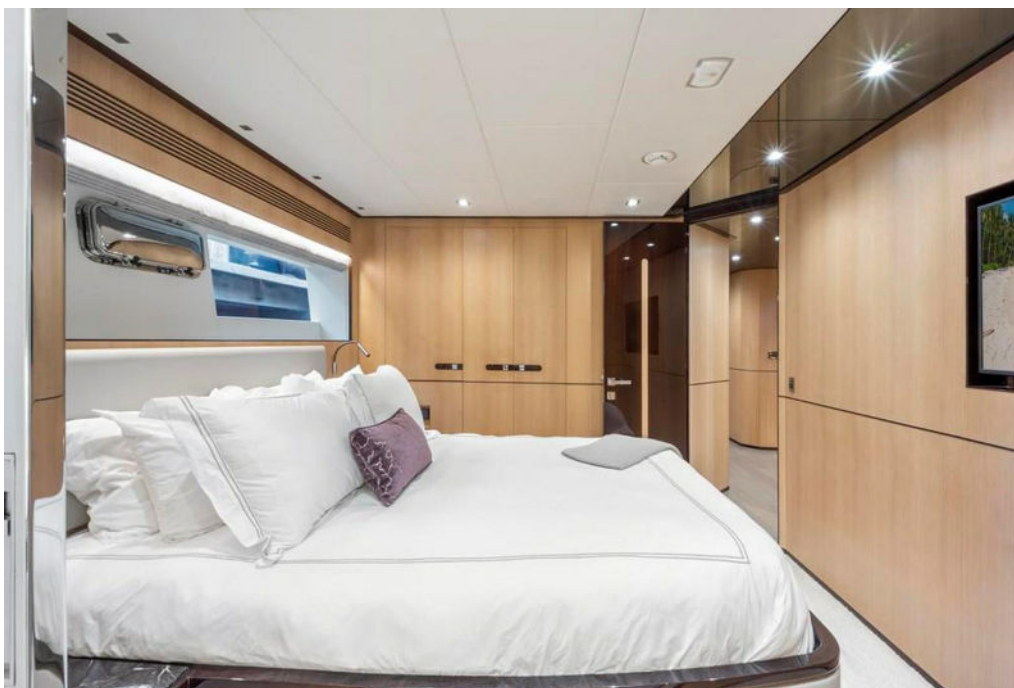
BELLA TU


Page 27 of 33

Guest Port Stateroom



Guest Port Stateroom Wood Panel Closet



Proud Member of 

Yacht Connexion
1201 US Hwy 1
Suite 1
North Palm Beach, Florida 33408
United States

P: +1-561-268-2467
sales@yachtconnexion.com
<https://yachtconnexion.com/>


BELLA TU

Guest Port Stateroom Vanity and Head



Guest Starboard Stateroom



Proud Member of  YATCO

Yacht Connexion
1201 US Hwy 1
Suite 1
North Palm Beach, Florida 33408
United States

P: +1-561-268-2467
sales@yachtconnexion.com
<https://yachtconnexion.com/>


BELLA TU

Guest Starboard Vanity and Shower



Guest Twin Stateroom w/Sliding Berths



Proud Member of 

Yacht Connexion
1201 US Hwy 1
Suite 1
North Palm Beach, Florida 33408
United States

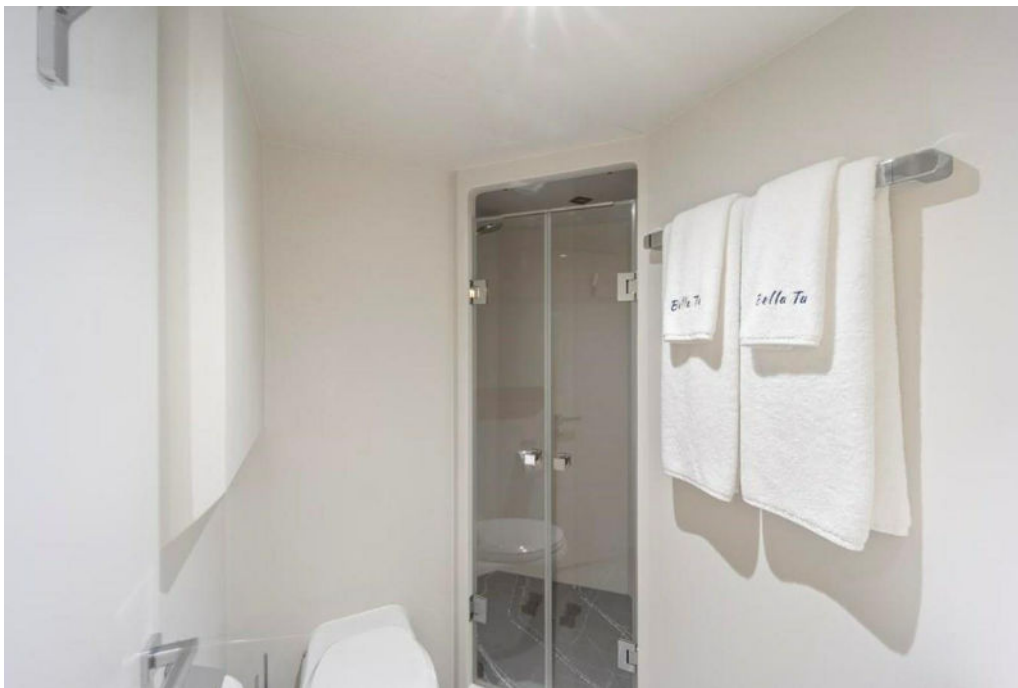
P: +1-561-268-2467
sales@yachtconnexion.com
<https://yachtconnexion.com/>


BELLA TU

Guest Twin Stateroom w/White Comforters



Crew Head and Shower



Proud Member of 

Yacht Connexion
1201 US Hwy 1
Suite 1
North Palm Beach, Florida 33408
United States

P: +1-561-268-2467
sales@yachtconnexion.com
<https://yachtconnexion.com/>


BELLA TU

Day Head



Pilothouse Helm Electronics & Navigation



Proud Member of 

Yacht Connexion
1201 US Hwy 1
Suite 1
North Palm Beach, Florida 33408
United States


P: +1-561-268-2467
sales@yachtconnexion.com
<https://yachtconnexion.com/>

BELLA TU

Page 32 of 33

Pilothouse Helm Monitors



Proud Member of  YATCO

Yacht Connexion
1201 US Hwy 1
Suite 1
North Palm Beach, Florida 33408
United States

P: +1-561-268-2467
sales@yachtconnexion.com
<https://yachtconnexion.com/>

BELLA TU

Page 33 of 33