

YACHT

CONNEXION

JEMILY II



2023 HORIZON FD100 Tri-Deck

LOA:	101' 6" (30.94m)	Build/Model Year:	2023 / 2023
Beam:	23' 4" (7.11m)	Builder:	HORIZON
Min Draft:	5' 10" (1.78m)	Type:	Motor Yacht Tri-Deck
Max Draft:	6' 1" (1.85m)	Price:	\$10,750,000 USD
Speed:		Location:	North Palm Beach, Florida United States
VAT Paid:			

Generated On 1/9/2025 11:40 AM by Luis Reyes

Proud Member of 

Yacht Connexion
1201 US Hwy 1
Suite 1
North Palm Beach Florida
33408 United States

Luis Reyes
P: 561-268-2467
M: 305-333-9462
luis@yachtconnexion.com
<https://yachtconnexion.com/>

JEMILY II

Page 1 of 52

Additional Specifications For JEMILY II:

LOA:	101' 6" (30.94m)	Delivery/Model	2023
Beam:	23' 4" (7.11m)	Year:	
Min Draft:	5' 10" (1.78m)	Year Built:	2023
Max Draft:	6' 1" (1.85m)	Builder:	HORIZON
Hull Material:	Fiberglass	Model:	FD100 Tri-Deck
Deck Material:	Teak and Fiberglass	Type:	Motor Yacht Tri-Deck
Range At Cruise Speed:		Top:	Open W/T-Top
Range At Max Speed:		Engines:	1900 HP, Twin, Inboard, Diesel, Caterpillar, C32A, 470hrs / 470hrs
Fuel Capacity:	4000 Gal	Staterooms:	5
Water Capacity:	400 Gal	Heads:	7
Holding Tank:	200 Gal	Captain Cabin:	Yes
Flag:	United States	Classifications:	
Location:	North Palm Beach, Florida United States	MCA: ISM:	
Price:	\$10,750,000 USD		

VESSEL OVERVIEW

We are proud to introduce Jemily II, a 2023 Horizon FD100 Tri-Deck. Jemily II is a customized, highly upgraded new build that has been professionally maintained in like-new condition since delivery.

Jemily II hosts a spacious 5 stateroom layout including an on-deck master and 4 ensuite cabins below. The on-deck master has the his & her head stationed aft of the berth, giving more privacy to the room and opening up locations for 3 large closets.

In the skylounge, Jemily II has a custom layout with a partial partition between the helm station and guest area. This partition holds the massive 85" TV on the aft side for those sitting in the settee and at the bar to enjoy. The skylounge also features a day head with both interior and exterior access.

The exterior spaces throughout the boat seek to impress, starting from the 2500lb Hi/Lo swim platform with a full beach club, and the spacious aft deck that offers al fresco dining with amazing views. The boat deck has more toy storage, a jacuzzi, and a grill. The bow features a large forward settee with sun pads and lastly, the tri-deck holds a stowable formal dining table, alongside another wet bar and settee. With 360-degree views, the tri-deck is a common favorite.

The upgrades continue through the engine room, with (2) CAT C-32 1900hp engines, (2) Onan 40kW generators, and ASEA frequency conversion providing power to the vessel. Continuing on, a 2200/3000 Spotzero-Water maker combination unit, (2) 40 gallon oil change tanks, and upgraded ABT 440/20X zero-speed fin stabilizers are a few additional impressive upgrades added.

Jemily II is an absolutely incredible vessel, and we encourage you to schedule a private viewing.

BEACH CLUB

- Hydraulic door with pantograph door in the middle
- Sofa seat w/ table
- Bar with S/S bar stools, sink, refrigerator, and icemaker
- Eskimo ice box under settee
- Flexiteak flooring

SALON AND DINING

- Electrical sliding door
- Dayhead w/interior & exterior access
- 55" LED TV
- Drink cooler under glass locker
- Electric blinds
- Glass holders in cabinets
- Fixed wood finish dining room table with seating for 10

GALLEY

- Hi-lo screen between galley and salon
- Under counter Scotsman ice maker
- Under counter wine cooler
- Garbage disposal
- SubZero refrigerator
- Miele hood & Wolf microwave
- 5 burner cooktop- Miele dishwasher
- Miele oven
- Trash compactor

MASTER STATEROOM MAIN DECK

- King berth with marble wall behind headboard
- Port side lounge seating
- Pop-up vanity w/drawers to starboard
- Hidden gun box w/lock in master STBD closet
- Electric blinds
- Rain shower in head
- Toto bidet seat
- Heated towel rack in head (2 units)
- Heated floor in head except shower room

GUEST COMPANIONWAY

- Miele stacked washer/dryer

GUEST STATEROOMS

- (3) Ensuite VIP staterooms
- (1) Ensuite Twin stateroom w/sliding berth

CREW QUARTERS

- Located aft
- Two cabins with (2) bunks each and head
- Captain's cabin with own head
- Satin finish wood on walls, vinyl ceiling
- Crew mess equipped with two-burner cook top, microwave, sink, undercounter refrigerator
- 32" TV
- Miele stacked washer/dryer
- Storage lockers
- Storage closet w/additional refrigeration
- Fire extinguisher

PILOTHOUSE

- Stidd pilot chairs
- Integrated instrument panel on helm station
- Day head
- Sofa seat w/table
- Heavy-duty Speich S/S wipers w/ wiper wash system
- Standard black mesh for windshield
- International LED navigation lights (incl. anchor, mast, stern, port side and starboard side light, total 5 units)
- Full set of engine gauges at helm
- Electric fuel and water level gauges
- Octoplex/Maretron monitoring
- Monitoring system for importation equipment (bilge pumps, blowers, navigation lights)
- Chain counter (one per windlass)
- Surveillance camera system (PTZ cameras at aft deck and engine room)
- USB charger

NAVIGATION SYSTEM

CHARTPLOTTERS:

GARMIN: GPSMAP 8624 Glass Bridge MFD w/g3 Charts
GARMIN: Twin SD Card Reader, USB, GPSMap 8xxx
GARMIN: GRID 20 MFD Remote, Vertical

TIME ZERO NOBELTEC:

TIMEZERO NAVIGATOR Nobeltec TZ-100
TIMEZERO Furuno Radar Module
HP EliteDesk 800 G6 Desktop Mini PC - Installed in Doghouse
8-Port Gigabit Ethernet Unmanaged Switch
Logitech - K400 Plus TKL Wireless Membrane Keyboard with Built-in Touchpad

SOUNDER:

GARMIN: GSD 25 Premium Sonar Module
AIRMAR: Xdcr, CHIRP-LH, 1 KW, In-Hull, 12 pin
GARMIN: Panoptix PS51-TH Thru-Hull Transducer, Adds FrontVu Forward-Looking Sonar

GARMIN RADAR:

GARMIN: Radar, GMR™ 1224 xHD2 12kw w/ 4 ft. Array

FURUNO RADAR- FAR1523:

FURUNO: Antenna, 6 Foot Open Array
FURUNO: Radar, Black Box, 25KW, 24VDC
Includes: Processor, control unit, and pedestal

AUTOPILOT:

SIMRAD: AP70 MK2 Basic Pack, Contains AP70 MK2 Controller, AC70 Computer, And RF300 Rudder Feedback
SIMRAD: Precision-9 Compass

COMPASS:

GARMIN: MSC 10 Marine Satellite Compass

VHF:

Icom M605 VHF Without AIS, Fixed Mount Radio, 25W Output Power
ICOM: CommandMic IV With White Backlight- Installed in Crew
ICOM: Microphone Cable- For front mount mics at helm

AIS:

GARMIN: AIS Class B, AIS 800, w/Splitter
GARMIN: GA 38 GPS/GLONASS Antenna

FLIR:

FLIR M-364C
GARMIN: Marine Network PoE Isolation Coupler

CAMERAS:

GARMIN: GC 200 Marine IP Camera
3 in engine room, 1 center fwd wall facing aft, 1 in each aft corner facing forward
2 outside salon door in center facing aft corners
1 aft deck center facing aft for tender

SIRIUSXM WEATHER:

GARMIN: GXM 54 SiriusXM Sat WX/Audio Receiver- Audio out to SONOS

INSTRUMENTS:

GARMIN: gWind Wired Transducer
Airmar UST850 Smart - NMEA 2000 - Bronze Housing
GARMIN: GMI 20 Digital Marine Instrument Display

CREW MFD:

GARMIN: GPSMAP 8610 MFD, g3 US+Can+Bahamas

SHIPS INTRANET WIFI ROUTER:

Cisco Router- 2.4GHz & 5GHz- Installed in dog house
A/V rack
Ubiquiti UniFi 802.11ac PoE+ Access Point 2.4ghz &

5ghz- Master, VIP. Skylounge, Aft Cockpit, & Salon
Ubiquiti UniFi Ethernet Switch 8-Port POE- Installed in
dog house
Ubiquiti UniFi Controller Cloud Key
Ethernet Switch; Multi-WAN Router, Enables Networks To
Switch Easily Between Multiple Internet Sources.
Cisco 48-Port Gigabit Unmanaged Switch- Installed in
doghouse

INTERNET SOURCE #1- WiFi:

AIGEAN: High Power Dual Band WiFi extender
kit,-2.4GHz & 5GHz

INTERNET SOURCE #2- CELL:

MoFi Cellular Device- Integrated Broadband Router
Shakespeare: Wide Band Cell Ant. with Mount, white

INTERNET SOURCE #3- VSAT:

TracVision HD11/TV10 Empty Dome/Baseplate; Complete
Assembly; No Labels
TracPhone V30; 2-axis Ku-band Antenna with stabilized
SKU & Integrated Modem- To be install in empty HD11
dome

HD TV:

TracVision HD11 with IP Antenna Control Unit (IPACU); Universal World Ka/Ku/Ka-band
Linear/Circular Quad-output LNB, No Labels

SKYLounge

- Helm station with carbon fiber dash board panel
- Lounge sofa to port
- Day head w/access door to outside
- Custom two-level bar with S/S bar stools, sink,
refrigerator, and icemaker, bottle storage
- Manual sliding door to boat deck with self lock
- 85" Samsung TV w/sound bar and stereo below

BOAT DECK/UPPER DECK

- Non-skid upper deck
- Jacuzzi with heating
- Propane barbecue
- Scotsman ice maker
- Oversize drains w/ strainers on each corner of upper deck and internal overboard drains
- Tokai Sanshin LED search light
- Chrome plated Buell air horns top of radar arch
- Hydraulic Steelhead davit 2500lb.

OPEN FLYBRIDGE

- No helm station
- Radar arch w/ antenna bracket
- Non-skid flybridge deck on entire deck area
- Windshield with S/S frame and S/S rails around forward flybridge
- FRP seat with table and FRP cabinet (with sink, refrigerator, and ice maker)
- Round sunpad
- 10-person folding dining table w/chairs - movable w/anchors
- Buffet style countertop
- Oversize drainage with strainers on each corner of flybridge deck and internal overboard drainages

DECKS AND EQUIPMENT

- Teak aft deck, teak swim platform and teak steps to boat deck and swim platform. Non-skid for the remaining
- (2) hidden designed flip-up wing stations
- YACHTPRO 100 compressor YP100SF-D 3hp dive compressor
- Aft deck sliding hi-lo table with 2 leaves
- (4) rod holders on aft deck behind aft deck FRP seat
- Besenzoni custom made 6m long hydraulic gangway
- Marquipt 8-step side boarding sea stair
- Marquipt 7-step carbon fiber side boarding sea stair
- Maxwell VWC500 vertical hydraulic anchor winch (x2) w/ local foot switches and remote
- Maxwell VC2500 electrical rope capstan on aft deck (x2) and bow deck (x1)
- 300ft high tensile 1/2" anchor chain (x2)
- 100Kg S/S anchor (x2)
- S/S rollers (x2) and chain stopper
- Heavy-duty 316 S/S cleats and fairlead w/rollers
- Freshwater/sea water anchor chain washdown system by manual operation
- 1-3/4" handrail with 1-1/2" S/S stanchions and steel cable around entire boat
- S/S flag pole at bow
- Standard lines and Pro-stock fenders
- Portuguese bridge with sofa seats
- Foredeck sunpads with fold-up back rests w/drink holders
- Sun awnings (3 sets), Tri-deck, Fwd bridge and boat deck w/carbon posts
- Pop up lights each side of sunpad
- Hydraulic Hi/Lo swim platform with function as tender lift up to max 2500lbs
- Upgraded aft deck cleats with 16,000lb towing capacity at slow speed
- Built-in shower with hot/cold water above swim platform
- One extractable swim ladder
- Removable corner rails on swim platform
- Wind doors each side of aft deck
- 65" flipdown LED TV aft deck
- Underwater lights, Lumishore EOS Interchangeable thru hull
- 5 Cameras

HULL AND MAIN STRUCTURE

- ABS/DNV type approved fiber/resin & sandwich core
- White gelcoat finish on hull above water line, exterior decks
- One piece hull SCRIMP/TM with the patented 6D infusion technology, incl. skeg and longitudinal girders
- Hull, deck & superstructure are built with licensed process SCRIMP TM for improved strength and less weight
- High-density foam cored hull bottom
- High-density Divinycell foam cored hull sides, decks, and superstructure
- Stringers with high density foam coring
- Interior structural components all properly bonded to hull
- Strong collision bulkhead structure for extra safety
- International anti-fouling bottom paint w/anti-osmosis treatment
- PropSpeed/PropGold metal paint
- Tunnels for reduced draft
- High Performance Piercing Bow (HPPB) with S/S protection plates
- Upper deck with bump out design at PORT and STBD side

PROPULSION AND STEERING

- Twin CAT C32A 1900hp diesel engines w/reduction gears
- S/S shafts Aqualoy 22 HS
- High performance S class 5 blade propellers in NiAlBr
- Bronze struts w/ backing plates
- Shaft and rudder packing glands with dripless seals
- ZF Mathers engine controls with chrome control heads or at helm station
- ONE remote handheld control (with throttles, gears, and thrusters) and TWO locations for “plug-in” receptacle (one at aft deck and one in pilothouse)
- FRP foil balanced blade rudder with S/S rudder stock
- S/S emergency tiller in rudder cabin.
- Custom steering wheel at helm station.
- Underwater exhaust system for engines w/ bypass mufflers
- ABT Zero Speed Stabilizer Model 440/20X
- ABT hydraulic bow and stern thrusters, 65hp
- Bennett heavy-duty trim tabs with indicators
- Anti-noise treatment to exhaust system

ENGINE ROOM AND EQUIPMENT

- Twin Caterpillar C32A 1900hp. Hours 9/2024: 470/470
- Engine room designed with lightweight honeycomb floor
- Heavy-duty insulated engine room door
- S/S overhead grab rail on each side of engine
- Delta T engine room demisters
- Engine alarm system
- Air compressor
- Marine Air chilled water A/C - (4) chillers + ER handler
- Air handlers for interior
- Back up sea water cooling pump and A/C circulation pump
- Headhunter Sanitary Treatment System

MAIN POWER SYSTEM

- Onan generators (2x) 40kW (60Hz) with sound shield
Hours: 1242 Port / 1227 Strbd
- 17. 255 Ah AGM start batteries (4x)
for engines/generators with battery chargers (2x)
- 210 Ah AGM batteries(x8) for ship's DC 24V service
power with combined inverter/chargers (2x)
- 210 Ah emergency batteries(2x) above main deck
w/ independent battery charger (1x)
- Ignition protected battery switch
- Octoplex multiplexing power distribution system
- Maretron monitoring and control system

FUEL OIL SYSTEM

- Fuel tanks w/ sight & electric gauges
- ISO grade fuel hose through entire system
- Dual Racor 75/1000 MA fuel filters/water separator, each
engine
- Racor 500 MA fuel filters (x2), one on each generator
- Electric fuel transfer pumps (x2)
- Oil change pump system for engines, gears, and
generators (2) 40 gallon tanks
- Reverso FPS210 fuel polishing system (x1)

ELECTRICAL SYSTEMS

- (2) ASEA Frequency Converters
- Color-coded wiring for easy identification
- AC & DC Main electric panel with circuit breakers
- Sub-panel design with circuit breakers in each zone for electrical distribution
- Emergency power package & lighting system
- AC volt receptacles located throughout including engine room
- GFI protection for all AC outlets in exterior, heads, galley, and engine room
- Fiberglass water/exhaust separator for generator
- Electrolysis bonding system
- Cathodic protection with zinc anodes for shafts, struts
- Indirect lighting under valance in saloon, staterooms, skylounge, and galley
- Dimmer system for LED ceiling lights in aft deck and skylounge
- Dimmer system for LED ceiling lights in saloon, master, and VIP staterooms
- Italian Vimar switches for lighting system
- Motion detection light at guest foyer close to staircase

SHORE POWER SYSTEM

- Glendinning shore power Cablemasters (x2) 100Amp w/ 75' power cable each
- Shore power connection w/ 100Amp ISO boost transformers which will be wired as polarization transformers (x2)
- Shore power plugs (x2), 100amp

PHONES / STEREO / AV

- TV antenna on top of radar arch
- 4G Cellular router System with Wi-Fi on board
- Open Flybridge with Fusion Marine stereo (x1) and speakers (x2)
- Skylounge 32" LED TV with Fusion Marine Stereo (x1) and speakers (x2)
- Boat deck Fusion Marine Stereo and speakers (x2) from skylounge Fusion Stereo
- Saloon 46" LED TV with Bose home entertainment system and separate Bluray disc player
- Aft deck Fusion Marine Stereo (x1) and speakers (x2)
- Master stateroom 40" LED TV with Bose home entertainment system and separate Blu-ray disc player
- VIP stateroom 32" LED TV with Fusion Marine Stereo (x1) and speakers (x2)
- Guest stateroom 22" LED TV with Fusion Marine Stereo (x1) and speakers (x2)
- Crew mess 22" LED TV with Fusion Marine Stereo (x1) and speakers (x2)
- Panasonic PBX Telephones (x5) with intercom features in saloon, skylounge, master stateroom, VIP stateroom, and crew mess
- Exterior connector for shore phone and cable TV

FRESH WATER SYSTEMS

- FRP water tank
- Marine grade pipe lines for hot & cold water system
- 30 gal water heaters (x2)
- High-volume Headhunter AC fresh water pressure pump and one DC pump for back up
- Spot Zero/Watermaker combination unit 2200130
- Fresh water outlet & hose for filling engine and generator expansion tank
- Charcoal filters are plumbed into the fresh water line: shore water inlet, galley, and crew galley
- Hot water circulation pump

SANITARY SYSTEM

- 200 gal holding tank with Y-valve and deck fitting for dockside pump out
- 100 gal sump tank with pump for each shower & washer drainage area
- Headhunter toilet system
- Electric level indicators for holding tank and sump tank

BILGE WATER SYSTEM

- Electric Rule bilge pumps
- Custom bilge vacuum system - Willy Vacr Bilge wet vac system
- Manual bilge pumps (x2) in engine room and forward staterooms
- (2) Engine driven JABSCO emergency bilge pumps
- High water level bilge alarm
- Bilge exhaust ventilation fans

FIRE AND SAFETY SYSTEM

- Fire insulation in engine room
- Fire resistant treatment for pipe penetrations
- Fixed fire extinguisher FM200
- Automatic/manual shutdown system
- Automatic fire damper system
- Portable fire extinguishers (x5)
- Integrated fire alarm system in pilothouse, with smoke detector in each cabin

Bow View



Port View



Port Aft View



Aerial View



Beach Club 1



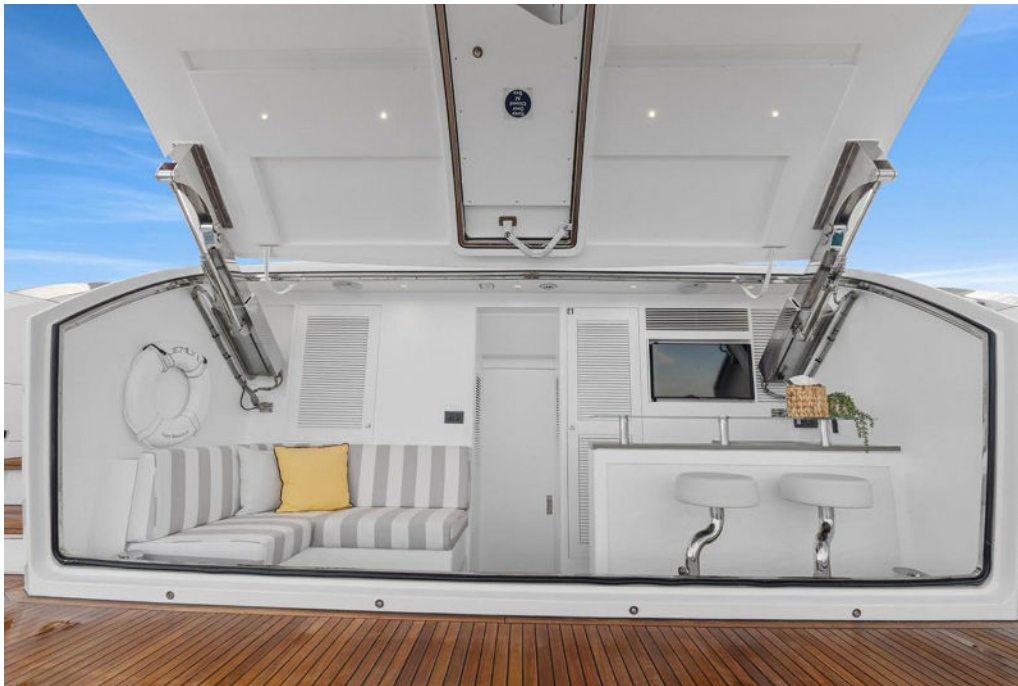
Swim Platform Beach Club



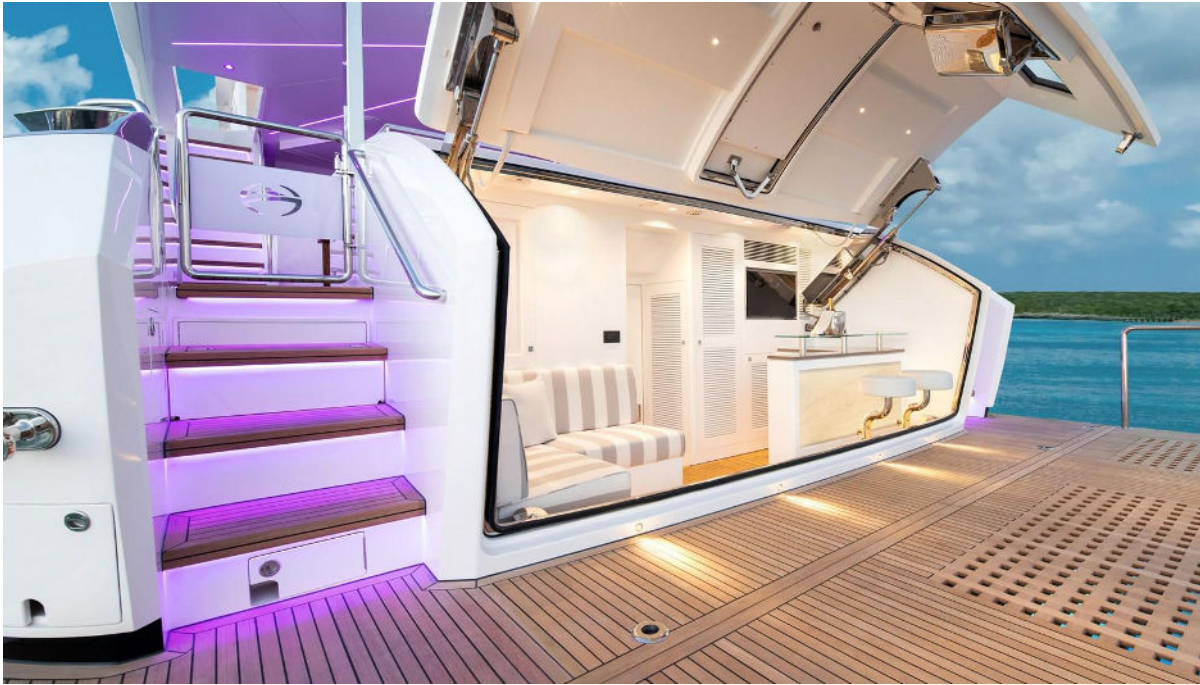
Beach Club



Beach Club and Access to Crew Quarters



Steps to Aft Deck



Aft View Night Lights



Aft Deck 1



Aft Deck 2



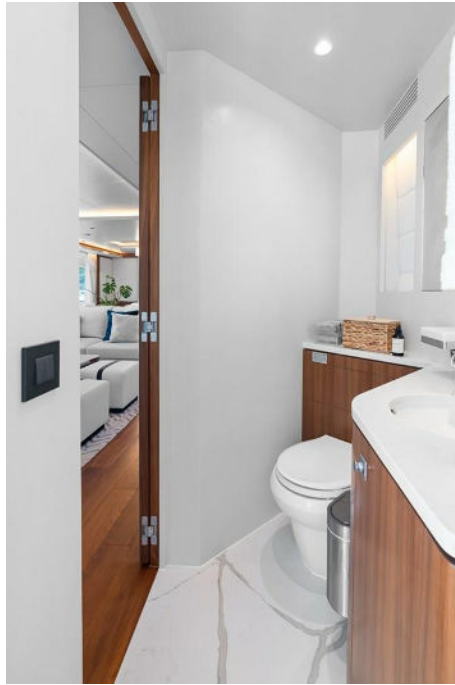
Aft Deck Table and TV



Aft Deck and Bar



Day Head In Salon



Salon 1



Salon 2



Salon 3



Dining Table and Chairs



Dining Table 1



Dining Table and Galley Partition



Galley 1



Galley 2



Master Suite 1



Master Suite 2



Master Suite 3



Master Suite 4



Master Suite 5



Master Suite Lounge Seat



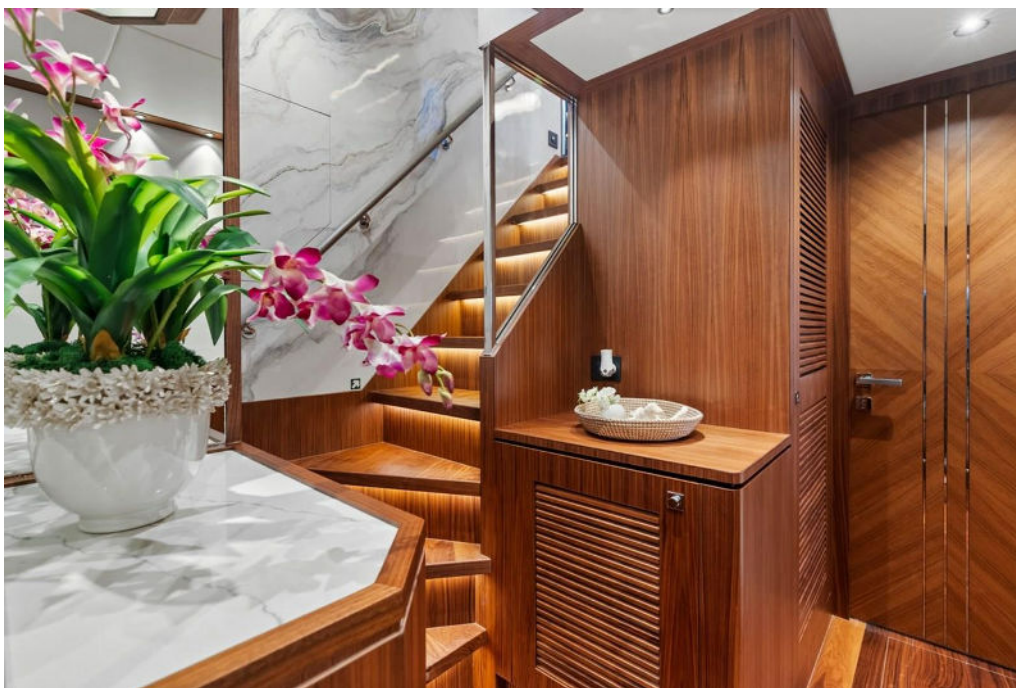
Master Vanity and Head



Master Shower



Staircase to Guest Staterooms



Companionway to Guest Staterooms



Guest Stateroom 1



Guest Stateroom 1 and Sliding Doors



Guest Vanity and Shower



Guest Stateroom 2



Guest Stateroom 2 and Closets



VIP Forward Stateroom 1



VIP Forward Stateroom 1 and Nightstand



VIP Head



Twin Guest Stateroom and Closet



Twin Guest Stateroom



Twin Stateroom TV



Guest Head Vanity



Guest Shower



Pilothouse Console



Pilothouse Captain Chairs



Pilothouse Cabinets



SKylounge Bar 1



Skylounge Bar 2



Skylounge Bar and TV



Skylounge Day Head



Port Side Deck



Starboard Side Deck



Bow Lounge Area and Sunshade



Bow Tables and Seating



Bow Table and Seating 2



Boat Deck Hot Tub



Boat Deck Grill



Boat Deck Davit



Boat Deck Looking Forward



Flybridge Deck Sunpad



Flybridge L-Shape Settee



Flybridge Looking Aft



Flybridge Sink and Cabinet



Flybridge Dining Table



Flybridge Stairs to Boat Deck



Flybridge Looking Forward



DSC08590 Large



DSC08599 Large



Crew Mess Area



Crew Cabin 1



Crew Cabin 2



Crew Head

